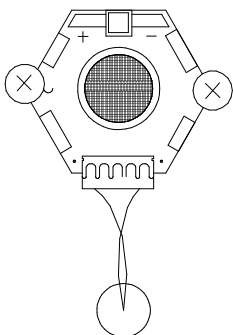


LED10

"



Unless Otherwise Specified: Dimensions in Inches Tolerances: Fractional ± Angular: Mach ± Bend ± Two Place Decimal ± Three Place Decimal ±	Drawn	lv	11/17/16	Primelite Mfg. Corp. 427/16-5 LED10 Prismatic frosted jelly jar
	Checked			
	ENG Appr.			
	MFR Appr.			
	QA			
Construction: Aluminum, steel, glass	Comments			Size A
	CAD Generated Drawing Do Not Manually Update			Drawing No. 0001
Lamp: 1 - LED10				Rev A
	Scale 1:5	CAD File	Sheet 1 of 1	